



Government of India
Ministry of Earth Sciences
India Meteorological Department



Press Release

Date: 28th August, 2025

Time of Issue: 1330 hours IST

Subject: i) Heavy to very heavy rainfall likely over Telangana, Konkan & Goa, Madhya Maharashtra, Kerala and Karnataka till tomorrow, the 29th August with extremely heavy falls over Coastal Karnataka and Telangana today.

ii) Isolated heavy rainfall spell likely to continue over Northwest India during next 6-7 days with isolated very heavy rainfall very likely over Uttarakhand on 28th & 29th August.

Realised weather during past 24 hours till 0830 hours IST of today, the 28th August, 2025:

- ❖ Heavy to very heavy rainfall at some places with Extremely heavy rainfall (≥ 21 cm) and exceptionally heavy rainfall has been recorded at isolated places over **Telangana (Kamareddy-41 cm)**.
- ❖ Heavy to very heavy rainfall with Extremely heavy rainfall (≥ 21 cm) has been recorded at isolated places over Goa.
- ❖ Very heavy rainfall (12-20 cm) has been recorded at isolated places over Coastal Karnataka, Sub-Himalayan West Bengal, south Konkan, Ghat areas of Madhya Maharashtra and Marathawada.
- ❖ Heavy rainfall (7-11 cm) has been recorded at isolated places over Uttarakhand, Himachal Pradesh, Punjab, East Rajasthan, Madhya Pradesh, Odisha, Gujarat Region, Interior Karnataka, Kerala, Coastal Andhra Pradesh, Arunachal Pradesh, Assam and Nagaland.

For more details of realised weather, kindly refer [Annexure I](#).

i. Weather Systems, Forecast and Warnings (refer to Annexure II & III):

- ❖ The western end of Monsoon trough runs near normal position and eastern end to the south of its normal position.
- ❖ Yesterday's **Well Marked low Pressure Area** over northwest Bay of Bengal off Odisha coast moved west-northwestwards and weakened into a Low Pressure area over South Odisha & adjoining Chhattisgarh at 0530 hrs IST of today. It lay over central parts of Chhattisgarh & neighbourhood at 0830 hrs IST of today, the 28th August 2025.
- ❖ A **Western Disturbance** as a **cyclonic circulation** lay over north Pakistan & adjoining Punjab in lower & middle tropospheric levels.
- ❖ A **shear zone** runs roughly along Lat. 17°N over the Indian region at middle tropospheric levels.

Under the influence of these systems, the following weather is likely:

South Peninsular India:

- ❖ **Heavy to very heavy rainfall with Extremely heavy rainfall** very likely at isolated places over Telangana and Coastal Karnataka on 28th August with heavy rainfall over Telangana during subsequent 2 days and heavy to very heavy rainfall over Coastal Karnataka during subsequent 6 days.
- ❖ Isolated **heavy rainfall** likely over Kerala on 28th & 29th August & on 02nd & 03rd September; Interior Karnataka on 28th & 29th August; Coastal Andhra Pradesh & Yanam on 28th August & 03rd September with **very heavy rainfall over Interior Karnataka, Tamil Nadu and Kerala on 28th August**.
- ❖ Light to moderate rainfall at most/many places accompanied with thunderstorm & lightning likely over the region during next 7 days.

East & Central India:

- ❖ Isolated **heavy rainfall** likely over Chhattisgarh, East Madhya Pradesh during next 7 days; Sub-Himalayan West Bengal & Sikkim, Vidarbha during 28th-30th; West Madhya Pradesh during 28th August-01st September; Bihar during 30th August-01st September; Jharkhand on 30th August; Odisha during 31st August-03rd September with isolated **very heavy rainfall over Vidarbha, Sub-Himalayan West Bengal on 28th August**.
- ❖ Light to moderate rainfall at most/many places accompanied with thunderstorm & lightning likely over the region during next 7 days.

West India:

- ❖ **Isolated heavy rainfall** is very likely over Gujarat region, Konkan & Goa, Madhya Maharashtra during next 7 days with **very heavy rainfall** over Konkan, Goa, Marathawada on 28th; Ghat areas of Madhya Maharashtra on 28th & 29th August.
- ❖ Light to moderate rainfall at most/many places very likely over the region during next 7 days.

Northwest India:

- ❖ Isolated **heavy rainfall** likely to continue over Uttarakhand, Himachal Pradesh, East Rajasthan during next 7 days; Jammu & Kashmir, Punjab, Haryana during 29th August-02nd September; West Rajasthan on 30th & 31st August; West Uttar Pradesh during 31st August-02nd September; East Uttar Pradesh on 01st & 02nd September with **isolated very heavy rainfall very likely over Uttarakhand on 28th & 29th August, 01st & 02nd September and East Rajasthan on 31st August**.
- ❖ Light/moderate rainfall at most/many places over Northwest India and accompanied with thunderstorm & lightning likely over Uttar Pradesh, Himachal Pradesh on 28th; West Rajasthan on 28th & 29th August; Jammu-Kashmir-Ladakh-Gilgit-Baltistan-Muzaffarabad, Uttarakhand during next 7 days.

Northeast India:

- ❖ Isolated **heavy rainfall** likely to continue over Arunachal Pradesh during 28th-30th August; Assam & Meghalaya, Nagaland, Manipur, Mizoram & Tripura on 28th & 29th August, 01st & 02nd September.
- ❖ Light/moderate rainfall at many places accompanied with thunderstorm & lightning likely during next 5 days.

Fishermen warning:

Fishermen are advised not to venture into the following from 28th August to 02nd September 2025 to the following Areas:

Arabian Sea

Along and off the Somalia, Oman coasts and adjoining sea areas during 28th August to 02nd September; over most parts of central Arabian Sea and adjoining areas of southwest Arabian Sea during 28th to 31st August; over most parts of central Arabian Sea and adjoining areas of southwest, northwest Arabian Sea on 31st August & 01st September; over Lakshadweep, Comorin areas during 28th to 30th August; along and off south Gujarat coast on 28th, 29th, 31st August & on 01st September; along and off Konkan, Goa, Karnataka coasts during 28th to 30th August & 31st August to 02nd September; along and off Kerala coast during 28th to 30th August.

Bay of Bengal:

Along and off Odisha, West Bengal, Bangladesh coasts during on 28th August, off Odisha coast on 29th & 30th August; along and off north Andhra Pradesh coast during 28th to 31st August & entire Andhra Pradesh coast during 31st August to 02nd September; over most parts of central Bay of Bengal on 28th, 29th August & on 01st September; most parts of westcentral Bay of Bengal on 30th & 31st August; most parts of southwest and adjoining southeast Bay of Bengal during 28th August to 02nd September.

Over Gulf of Mannar during 28th to 31st August & on 01st September.

Over Andaman Sea during 31st August to 02nd September.

ii. Weather conditions and forecast over Delhi/NCR during 28th to 31st August, 2025 (Annexure IV)

For more details, kindly refer National Weather Bulletin:

https://mausam.imd.gov.in/responsive/all_india_forecast_bulletin.php

For District wise warnings refer: <https://mausam.imd.gov.in/responsive/districtWiseWarningGIS.php>

For Fishermen warning refer <https://rsmcnewdelhi.imd.gov.in/fishermen-warning.php>

Rainfall recorded (in cm) during past 24 hours till 0830 hours IST of today, the 28th August:

Telangana: Kamareddy (dist Kamareddy) 41, Naga Reddipet (dist Kamareddy) 33, Bhiknur (dist Kamareddy) 33, Tadwai (dist Kamareddy) 33, Sadasivanagar (dist Kamareddy) 32, Lingampet (dist Kamareddy) 32, Chegunta (dist Medak) 26, Domakonda (dist Kamareddy) 25, Yellareddy (dist Kamareddy) 25, Machareddy (dist Kamareddy) 25, Laxmanchanda (dist Nirmal) 22, Thimmapur (dist Karimnagar) 22, Tadwai Mlg (dist Mulugu) 21, Papannapet (dist Medak) 21, Govindaraopet (dist Mulugu) 20, Doultabad (dist Siddipet) 20, Ramayampet (dist Medak) 20, Kondapak (dist Siddipet) 19, Sarangapur (dist Nirmal) 19, Dhar Palle (dist Nizamabad) 18, Medak (dist Medak) 18, Sathupalle (dist Khammam) 17, Sarangapur (dist Jagtial) 17, Dilawarpur (dist Nirmal) 16, Bheemgal (dist Nizamabad) 15, Tekmal (dist Medak) 15, Gambhiraopet (dist Rajanna Sircilla) 14, Ellanthukunta (dist Rajanna Sircilla) 14, Gandhari (dist Kamareddy) 14, Nagireddypet(a) (dist Kamareddy) 13, Alladurg (dist Medak) 13, Chinthakam (dist Khammam) 13, Khammam Urban (dist Khammam) 12, Khammam(arg) (dist Khammam) 12, Mirdoddi (dist Siddipet) 12, Regode (dist Medak) 12, Konijerla (dist Khammam) 12, Thollada (dist Khammam) 12, Tandoomncl (dist Mancherial) 11, Kammar Palle (dist Nizamabad) 11, Shankarapatnam (dist Karimnagar) 11, Jannaram (dist Mancherial) 11, Mortad (dist Nizamabad) 11, Varni (dist Nizamabad) 11, Wargal (dist Siddipet) 11, Bejjanki (dist Siddipet) 10, Gajwel (dist Siddipet) 10, Yeda Palle (dist Nizamabad) 10, Jammikunta (dist Karimnagar) 10, Hathanoora (dist Sangareddy) 10, Ghanpurjskb (dist J. Bhupalpally) 10, Balkonda (dist Nizamabad) 10,

Coastal Karnataka: Gersoppa (dist Uttara Kannada) 17, Honavar Obsy (dist Uttara Kannada) 14, Ankola (dist Uttara Kannada) 13, Karwar Obsy (dist Uttara Kannada) 12, Mangaluru Ap Obsy (dist Dakshina Kannada) 12, Kadra (dist Uttara Kannada) 12, Manki (dist Uttara Kannada) 9, Kumta (dist Uttara Kannada) 9, Shakti Nagar Obsy (dist Dakshina Kannada) 9, Sulya (dist Dakshina Kannada) 9, Mani (dist Dakshina Kannada) 9, Karkala (dist Udupi) 9, Bantwal (dist Dakshina Kannada) 9, Siddapura (dist Udupi) 9, Kundapur (dist Udupi) 8, Udupi (dist Udupi) 8, Dharmasthala (dist Dakshina Kannada) 7, Uppinangadi (dist Dakshina Kannada) 7, Kota (dist Udupi) 7, Mudubidre (dist Dakshina Kannada) 7,

Konkan & Goa: Sanguem (dist South Goa) 19; Ponda (dist North Goa), Quepem (dist South Goa) 18 Each; Mapusa (dist North Goa), Dodamarg (dist Sindhudurg) 17 Each; Canacona (dist South Goa), Panjim (dist North Goa) 15 Each; Sawantwadi (dist Sindhudurg) 14; Kudal (dist Sindhudurg), Vaibhavwadi (dist Sindhudurg) 11 Each; Mormugao - Pmo IMD (dist South Goa), Ratnagiri (dist Ratnagiri), Mulde ARG (dist Sindhudurg), Dabolim N.a.s.- Navy (dist South Goa) 9 Each; Sangameshwar Devrukh (dist Ratnagiri), Lanja (dist Ratnagiri) 8 Each; Rajapur (dist Ratnagiri) 7;

Sub Himalayan West Bengal & Sikkim: Jiti T.e. (dist Jalpaiguri) 15; Ghughumari (dist Cooch Behar) 11; Alipurduar PTO (dist Alipurduar) 10; Barobhisha (dist Alipurduar), Nh31 Bridge (dist Jalpaiguri), Cooch Behar (dist Cooch Behar), Mekhliganj (dist Cooch Behar), Shipgyar (dist Mangan) 9 Each; Jhallong (dist Kalimpong) 8; Buxaduar (dist Alipurduar), Dharala Valley Tea Esta (dist Jalpaiguri), Diana Tea Estate (dist Jalpaiguri), Hilla T.e. (dist Jalpaiguri), Sankos Tea Estate (dist Alipurduar) 7 Each;

Madhya Maharashtra: Gaganbawada (dist Kolhapur) 13; Radhanagari (dist Kolhapur) 10;

Marathwada: Naigaon Khairgaon (dist Nanded) 12; Udgir - IMD Parttime (dist Latur) 11; Jalkot (dist Latur) 10; Renapur (dist Latur), Udgir (dist Latur) 9 Each; Ausa (dist Latur) 8; Chakur (dist Latur), Lohara (dist Dharashiv), Mukhed (dist Nanded), Shirur Anantpal (dist Latur), Georai (dist Beed) 7 Each;

West Madhya Pradesh: Bajna (dist Ratlam) 11; Khalwa (dist Khandwa) 10; Sanwer (dist Indore), Raoti (dist Ratlam) 8 Each; Amla (dist Betul) 7;

Uttarakhand: Pantnagar (dist Udham Singh Nagar) 11;

Himachal Pradesh: Pandoh (dist Mandi) 11;

South Interior Karnataka: Agumbe Aws (dist Shivamogga) 11,

Kerala & Mahe: Hosdurg (dist Kasargod) 10; Enamakal (dist Thrissur), Vellanikkara (dist Thrissur), Karipur Ap. (dist Malappuram), Chimoni ARG (dist Thrissur), Peringome AWS (dist Cannur), Padannakkad AWS (dist Kasargod), Lower Sholayar AWS (dist Thrissur), Kozhikode (dist Kozhikode) 8 Each; Kunnankulam (dist Thrissur), Vilangankunnu ARG (dist Thrissur), Kannur Airport AWS (dist Cannur), Chamberi AWS (dist Cannur), Panathur AWS (dist Kasargod), Madikkai AWS (dist Kasargod), Bayar AWS (dist Kasargod), Peechi AWS (dist Thrissur), Ams Kannur (dist Cannur) 7 Each;

Coastal Andhra Pradesh & Yanam: Tiruvuru (dist Ntr District) 10; Nandigama (dist Ntr District) 9; Polavaram (dist Eluru), Bhimadole (dist Eluru), Bheemavaram (dist West Godavari) 8 Each;

North Interior Karnataka: Yedrami (dist Kalaburgi) 9, Bidar Pto (dist Bidar) 9,

Londa (dist Belagavi) 7, Narayanpur Hms (dist Yadgir) 7, Nalwatwad (dist Vijayapura) 7,

Gadag Pbo Obsy (dist Gadag) 7, Manthala (dist Bidar) 7,

East Rajasthan: Veja SR (dist Dungarpur) 9; Dhambola (dist Dungarpur) 8; Chhotisadri (dist Pratapgarh) 7;

Assam & Meghalaya: Dhemaji (dist Dhemaji) 9; Byrnihat ARG (dist Ri Bhoi) 8; Cherrapunji (dist East Khasi Hills) 7;

Odisha: Banki (dist Cuttack) 7;

Rajalaseema: Srisailam (dist Nandyal) 7;

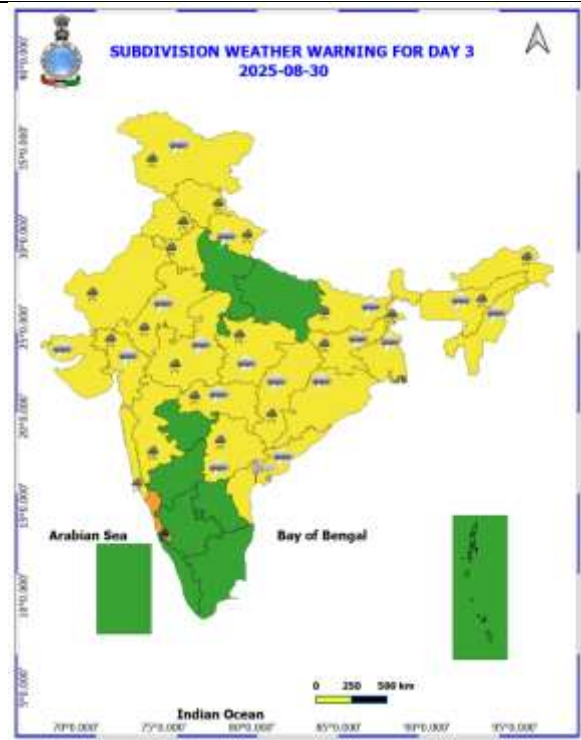
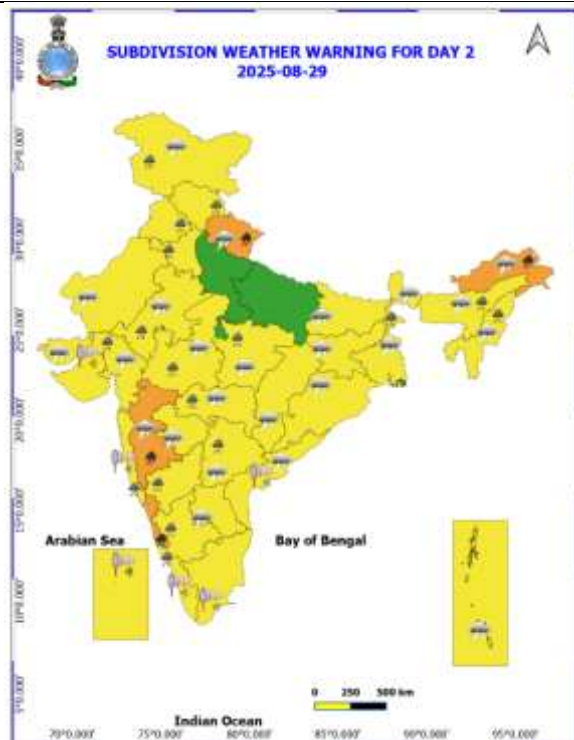
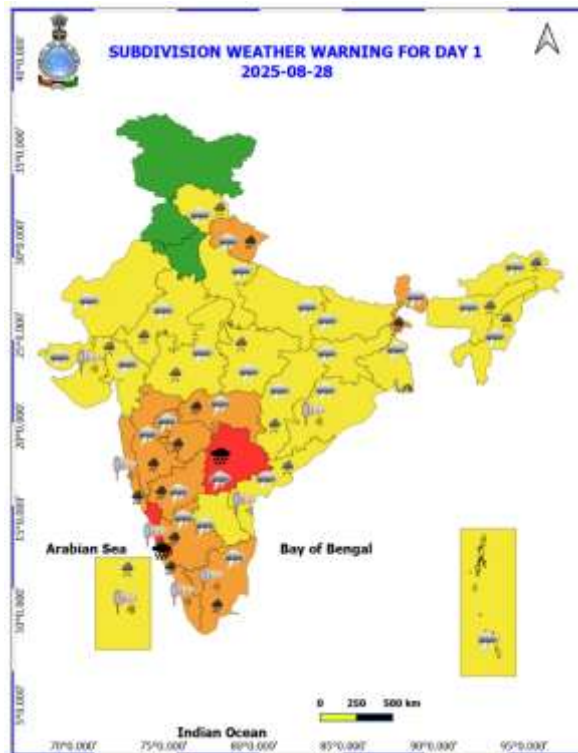
Punjab: Nawanshahr (dist Sbs Nagar) 7;

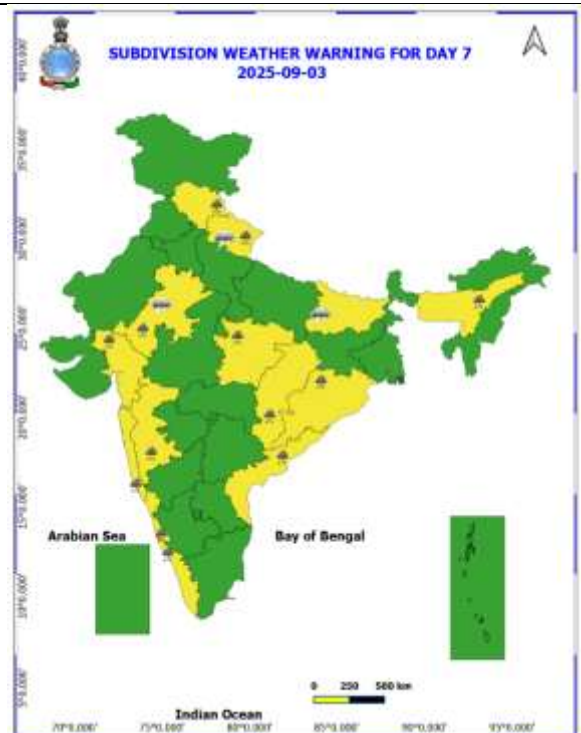
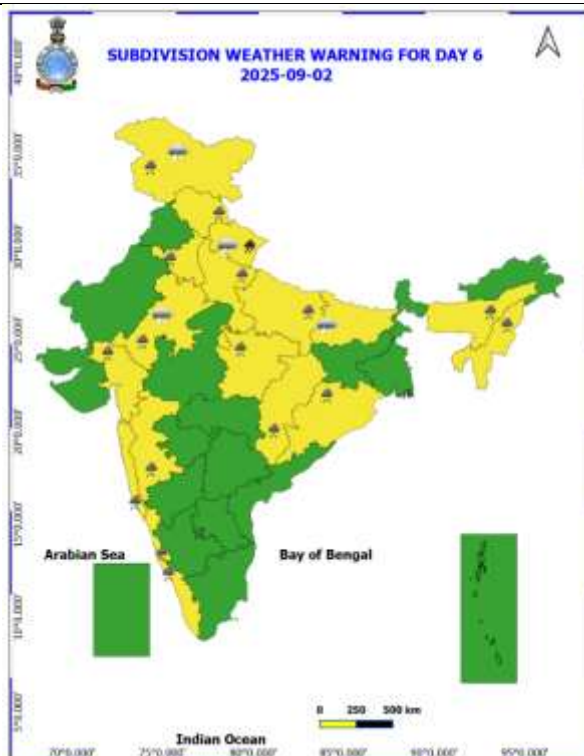
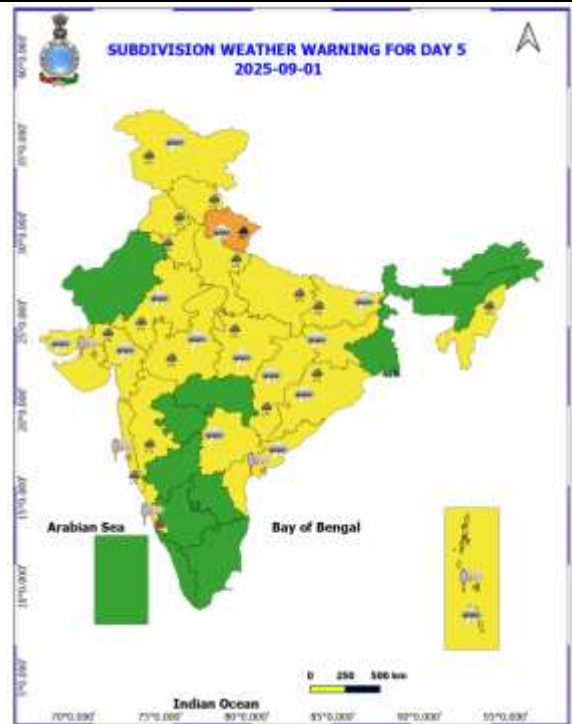
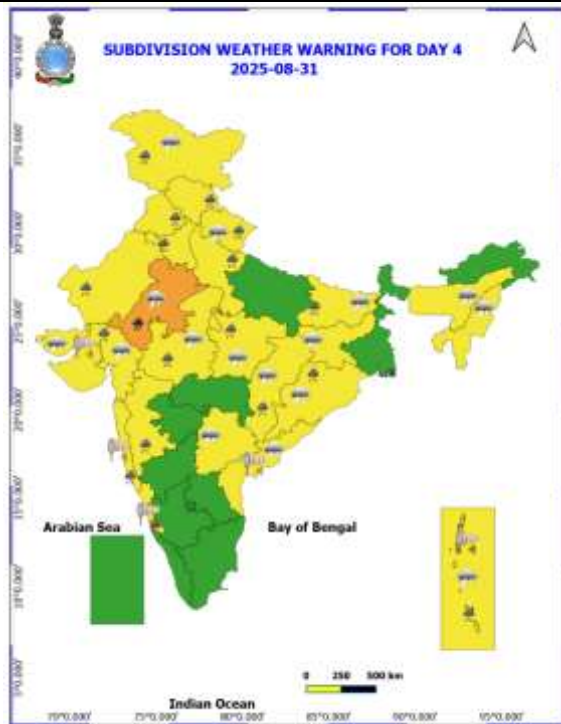
Gujarat Region: Lunawada (dist Mahisagar), Narmada Kvk AWS (dist Narmada) 7 Each;

East Madhya Pradesh: Seoni (dist Seoni) 7.

| Table-1 | | | | | | | | |
|--------------------------|--|---------|---------|---------|---------|--------|--------|--------|
| 7 Days Rainfall Forecast | | | | | | | | |
| S.No. | Subdivision | 28- Aug | 29- Aug | 30- Aug | 31- Aug | 1- Sep | 2- Sep | 3- Sep |
| | | Day 1 | Day 2 | Day 3 | Day 4 | Day 5 | Day 6 | Day 7 |
| 1 | ANDAMAN & NICOBAR ISLANDS | FWS | FWS | FWS | WS | WS | WS | WS |
| 2 | ARUNACHAL PRADESH | WS | WS | FWS | SCT | SCT | SCT | SCT |
| 3 | ASSAM & MEHGHALAYA | WS | WS | SCT | SCT | SCT | SCT | FWS |
| 4 | NAGALAND, MANIPUR, MIZORAM AND TRIPURA | WS | WS | FWS | SCT | SCT | FWS | FWS |
| 5 | SUB HIMALAYAN WEST BENGAL & SIKKIM | WS | WS | WS | FWS | FWS | FWS | FWS |
| 6 | GANGETIC WEST BENGAL | FWS | WS | FWS | FWS | FWS | FWS | FWS |
| 7 | ODISHA | SCT | SCT | FWS | FWS | FWS | FWS | FWS |
| 8 | JHARKHAND | SCT | FWS | WS | WS | WS | FWS | FWS |
| 9 | BIHAR | SCT | SCT | FWS | FWS | FWS | SCT | SCT |
| 10 | EAST UTTAR PRADESH | ISOL | ISOL | ISOL | SCT | FWS | SCT | ISOL |
| 11 | WEST UTTAR PRADESH | ISOL | ISOL | SCT | FWS | WS | FWS | SCT |
| 12 | UTTARAKHAND | WS | WS | WS | WS | WS | WS | FWS |
| 13 | HARYANA, CHANDIGARH & DELHI | SCT | SCT | FWS | FWS | FWS | FWS | SCT |
| 14 | PUNJAB | ISOL | SCT | FWS | FWS | FWS | SCT | SCT |
| 15 | HIMACHAL PRADESH | FWS | WS | WS | WS | WS | FWS | FWS |
| 16 | JAMMU AND KASHMIR AND LADAKH | SCT | SCT | FWS | FWS | FWS | FWS | SCT |
| 17 | WEST RAJASTHAN | SCT | SCT | SCT | SCT | SCT | SCT | SCT |
| 18 | EAST RAJASTHAN | SCT | FWS | FWS | FWS | FWS | FWS | FWS |
| 19 | WEST MADHYA PRADESH | FWS | FWS | WS | WS | WS | FWS | FWS |
| 20 | EAST MADHYA PRADESH | FWS | FWS | FWS | WS | WS | FWS | FWS |
| 21 | GUJRAT REGION | WS | WS | WS | WS | WS | WS | WS |
| 22 | SAURASHTRA & KUTCH | SCT | FWS | FWS | FWS | FWS | FWS | FWS |
| 23 | KONKAN & GOA | WS | WS | WS | WS | WS | WS | WS |
| 24 | MADHYA MAHARASHTRA | FWS | FWS | SCT | SCT | SCT | SCT | SCT |
| 25 | MARATHWADA | WS | FWS | ISOL | ISOL | ISOL | ISOL | SCT |
| 26 | VIDARBHA | WS | WS | FWS | SCT | SCT | FWS | FWS |
| 27 | CHHATTISGARH | FWS | SCT | FWS | FWS | FWS | FWS | FWS |
| 28 | COASTAL ANDHRA PRADESH | FWS | SCT | SCT | SCT | SCT | SCT | SCT |
| 29 | TELANGANA | WS | FWS | FWS | SCT | SCT | SCT | SCT |
| 30 | RAYALASEEMA | SCT | ISOL | ISOL | ISOL | ISOL | ISOL | ISOL |
| 31 | TAMILNADU & PUDUCHERRY | ISOL | ISOL | ISOL | ISOL | ISOL | ISOL | ISOL |
| 32 | COSTAL KARNATAKA | WS | WS | WS | WS | WS | WS | WS |
| 33 | NORTH INTERIOR KARNATAKA | WS | FWS | FWS | SCT | SCT | SCT | SCT |
| 34 | SOUTH INTERIOR KARNATAKA | WS | FWS | SCT | SCT | ISOL | ISOL | SCT |
| 35 | KERALA AND MAHE | WS | WS | FWS | FWS | FWS | FWS | FWS |
| 36 | LAKSHADWEEP | WS | WS | FWS | FWS | FWS | FWS | FWS |

- As the lead period increases forecast accuracy decrease.





- Action may be taken based on ORANGE AND REDCOLOUR warnings.
- Vulnerable regions likely urban and hilly areas action may be initiated for heavy rainfall warning.
- As the lead period increases forecast accuracy decreases.

Detailed districtwise Multi Hazard weather warning for next five days available at
<https://mausam.imd.gov.in/responsive/districtWiseWarningGIS.php>

Weather forecast over Delhi/NCR during 28th to 31th August 2025**Past Weather:**

There has been no large change in the minimum temperature and fall in maximum temperature up to 1 - 2°C over Delhi/NCR during the past 24 hours. The maximum and minimum temperatures over Delhi were around 28 to 30°C and 23 to 25°C respectively. The minimum temperature was below normal up to 1°C and maximum temperature was below normal up to 4 - 6°C. Generally cloudy sky conditions with predominant surface wind from the northeast/east direction with wind speeds up to 18 kmph prevailed during the past 24 hours. Very light to light rain/thundershowers at most places with moderate rain at isolated places has been recorded in Delhi. Generally cloudy sky conditions with a wind speed of less than 14 kmph from the east direction prevailed over the region in the forenoon today.

Weather Forecast:

28.08.2025: Generally cloudy sky. One or two spells of very light to light rain/thundershowers at few places during afternoon/evening. The maximum temperatures over Delhi are likely to be in the range of 33 to 35°C. The maximum temperature will be near normal. The predominant surface wind will likely be from the southeast direction with a wind speed of up to 10-15 kmph during the afternoon hours. The wind speed will decrease becoming less than 12 kmph from the southeast direction during the evening and night.

29.08.2025: Generally cloudy sky. One or two spells of very light to light rain/thundershowers. The maximum and minimum temperatures over Delhi are likely to be in the range of 31 to 33°C and 23 to 25°C respectively. The minimum temperature will be below normal up to 1 to 2°C and the maximum temperature will be below normal up to 1 to 2°C. The predominant surface wind will likely to be from the southeast direction with a wind speed of up to 10 - 15 kmph during morning hours. The wind speed will gradually increase becoming less than 18 kmph from the southeast direction in the afternoon. The wind speed will decrease becoming less than 15 kmph from the southeast direction during the evening and night.

30.08.2025: Generally cloudy sky. Possibility of very light to light rain/ thundershowers. The maximum and minimum temperatures over Delhi are likely to be in the range of 31 to 33°C and 22 to 24°C respectively. The minimum temperature will be below normal up to 2 to 4°C and the maximum temperature will be below normal up to 1 to 3°C. The predominant surface wind will likely to be from the southeast direction with a wind speed of up to 10-15 kmph during morning hours. The wind speed will gradually increase becoming less than 22 kmph from the southeast direction in the afternoon. The wind speed will decrease becoming less than 16 kmph from the southeast direction during the evening and night.

31.08.2025: Generally cloudy sky. Possibility of very light to light rain/thundershowers. The maximum and minimum temperatures over Delhi are likely to be in the range of 30 to 32°C and 22 to 24°C respectively. The minimum temperature will be below normal up to 2 to 4°C and the maximum temperature will be below normal up to 2 to 4°C. The predominant surface wind will likely be from the southeast direction with a wind speed of less than 12 kmph during the morning hours. The wind speed will gradually increase becoming less than 15 kmph from the southeast direction in the afternoon. The wind speed will decrease becoming less than 12 kmph from the southeast direction during the evening and night.

Impact expected and Action Suggested due to light to moderate rainfall with thundershowers:

- Damage to standing crops, Minor to major damage to power and communication lines due to breaking of branches, Partial damage to vulnerable structures due to strong winds, Loose objects may fly.
- People are advised to keep a watch on the weather for worsening conditions and be ready to move to safer places accordingly, stay indoors, close windows & doors and avoid travel if possible, take safe shelters; do not take shelter under trees, do not lie on concrete floors and do not lean against concrete walls, unplug electrical/ electronic appliances, immediately get out of water bodies, keep away from all the objects that conduct electricity.

Impact & Action Suggested due to

- ❖ **Isolated Extremely heavy rainfall** very likely at isolated places over Telangana and Coastal Karnataka on 28th August.
- ❖ **Isolated very heavy rainfall** over Coastal Karnataka on 29th & 30th; Interior Karnataka, Tamil Nadu, Kerala, Vidarbha, Sub-Himalayan West Bengal, Konkan, Goa, Marathawada on 28th; ghat areas of Madhya Maharashtra on 28th & 29th August; over Uttarakhand on 28th & 29th August, 01st & 02nd September and East Rajasthan on 31st August.

Impact Expected

- Localized Flooding of roads, water logging in low lying areas and closure of underpasses mainly in urban areas of the above region.
- Occasional reduction in visibility due to heavy rainfall.
- Disruption of traffic in major cities due to water logging in roads leading to increased travel time.
- Minor damage to kutcha roads.
- Possibilities of damage to vulnerable structure.
- Localized Landslides/Mudslides/landslips/mudslips/landsinks/mudsinks.
- Damage to horticulture and standing crops in some areas due to inundation.
- It may lead to riverine flooding in some river catchments (for riverine flooding please visit Web page of CWC)

Action Suggested

- Check for traffic congestion on your route before leaving for your destination.
- Follow any traffic advisories that are issued in this regard.
- Avoid going to areas that face the water logging problems often.
- Avoid staying in vulnerable structure.

Agromet advisories for likely impact of Heavy / Heavy to Very Heavy / Extremely Heavy Rainfall

- In **Telangana**, drain out excess water from fields of rice, cotton, maize, soybean, pigeon pea, turmeric and vegetables in **Northern Telangana Zone** and rice, cotton, soybean, maize and pigeon pea in **Southern Telangana Zone**.
- In **Karnataka**, provide adequate drainage facilities in rice fields and plantations of arecanut and banana in **Coastal Zone**; rice, maize, cotton, ginger fields and plantations of arecanut in **Hill Zone**; maize, ginger fields and plantations of arecanut and black pepper in **Southern Transition Zone** and groundnut, green gram, cotton and pigeon pea fields in **North East Dry Zone**.
- In **Kerala**, ensure adequate drainage facilities in rice nursery and standing crop fields. Provide support to banana plants.
- In **Coastal Andhra Pradesh**, make arrangements for draining excess water from fields of maize, green gram, groundnut, mesta and cotton in **North Coastal Zone**; maize, groundnut, finger millet, ginger, turmeric and vegetables in **High Altitude Tribal Zone** and rice, maize, pigeon pea, cotton, black gram and groundnut in **Krishna Godavari Zone**.
- In **Maharashtra**, make arrangements to drain out excess water from fields of rice, finger millet, turmeric, groundnut, vegetables and fruit orchards in **Konkan**; rice, maize, groundnut, soybean, vegetable fields and fruit orchards in **ghat areas** of **Madhya Maharashtra**; cotton, pigeon pea, soybean, vegetables and fruit orchards in **Vidarbha** and black gram, green gram, soybean, cotton, pigeon pea, groundnut, maize, sorghum, pearl millet, sugarcane, turmeric, vegetables and fruit orchards in **Marathwada**.
- In **Uttarakhand**, maintain proper drainage channels in fields of barnyard millet, finger millet and green gram in **Sub Humid Sub Tropic Zone** and rice, green gram, black gram, sugarcane, maize, groundnut, finger millet and vegetables in **Bhabar and Tarai Zone**. In **Hill Zone**, postpone sowing of vegetable pea and radish and provide proper drainage in fields of finger millet and kidney beans.
- In **Jammu and Kashmir**, drain out excess rain water from fields of rice, maize, pulses and vegetables in **Sub Tropical Zone** and maize, *kharif* pulses, rice and vegetables in **Intermediate Zone**. In **Valley Temperate Zone**, ensure proper drainage in fields of maize, kidney beans and vegetables and maintain a thin layer of water in rice fields.

- In **Himachal Pradesh**, maintain proper drainage channels in ginger, turmeric and maize fields in **Mid Hills Sub Humid Zone** and rice, maize and vegetable fields in **Sub Montane and Low Hills Sub Tropical Zone**. In **High Hills Sub Temperate Wet Zone**, postpone transplanting of cauliflower, cabbage and broccoli seedlings and make proper drainage channels in fields of maize, finger millet and vegetables to avoid water stagnation.
- In **Sub-Himalayan West Bengal**, make provision to drain out excess water from *aman* paddy and vegetable fields (chilli, bitter gourd, pointed gourd, okra, brinjal etc.) in **Terai Zone**.

Livestock / Fishery

- Keep the animals inside the shed during heavy rainfall and provide them balanced feed.
- Store feed and fodder in a safe place to prevent spoilage.
- Construct an outlet with proper netting around the ponds to drain out excess water, thereby preventing fish from escaping in case of overflow.

Agromet advisories for likely impact of Thunderstorm / Gusty Winds / Squally Winds (Based on the IBF and advisories issued by different AMFUs)

- Provide mechanical support to horticultural crops and staking or support to vegetables and young fruit plants / fruit-bearing plants to avoid lodging due to strong winds.

Flash flood guidance:

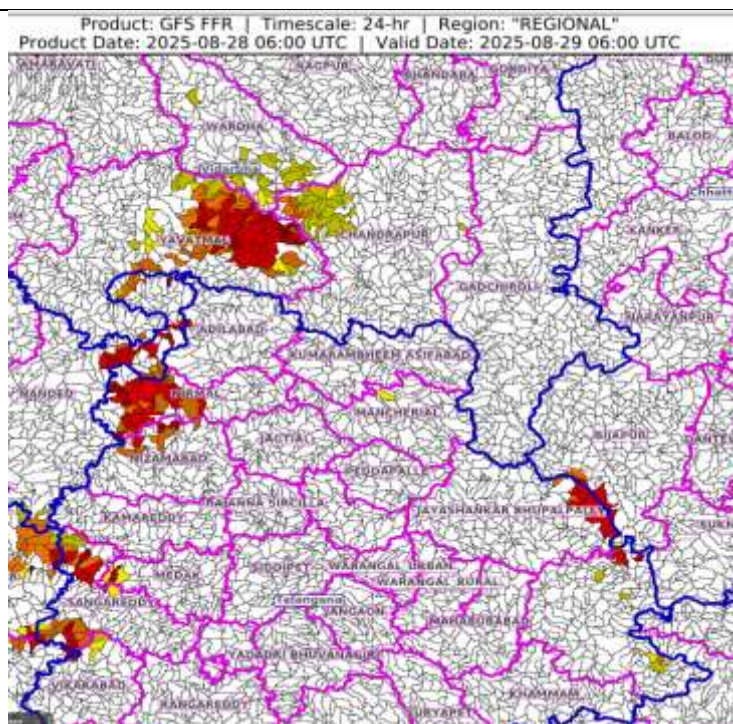
24 hours Outlook for the Flash Flood Risk (FFR) till 1130 IST of 29-08-2025 :

Low to Moderate flash flood risk likely over few watersheds & neighbourhoods of following Met Sub-divisions during next 24 hours.

Telangana - Adilabad, Kamareddy, Medak, Nirmal, Nizamabad, Sangareddy and Vikarabad districts.

Vidarbha - Chandrapur, Wardha and Yavatmal districts.

Surface runoff/ Inundation may occur at some fully saturated soils & low-lying areas over Area of Concern (AoC) as shown in map due to expected rainfall occurrence in next 24 hours.



Legends & abbreviations:

- ❖ **Heavy Rain:**64.5-115.5mm; **Very Heavy Rain:**115.6-204.4mm; **Extremely Heavy Rain:** >204.4mm.
- ❖ **Obsy:** Observatory; Automatic Weather Station; **ARG:** Automatic Rain Gauge; **dist:** District; **NH:** National Highway; **KVK:** Krishi Vigyan Kendra; **DVC:** Damodar Valley Corporation; **PTO:** Part Time Office, **Aero:** Aerodrome, **IAF:** Indian Air Force.
- ❖ **Region wise classification of meteorological Sub-Divisions:**
 - **Northwest India:** Western Himalayan Region (Jammu-Kashmir-Ladakh-Gilgit-Baltistan-Muzaffarabad, Himachal Pradesh and Uttarakhand); Punjab, Haryana-Chandigarh-Delhi; West Uttar Pradesh, East Uttar Pradesh, West Rajasthan and East Rajasthan.
 - **Central India:** West Madhya Pradesh, East Madhya Pradesh, Vidarbha and Chhattisgarh.
 - **East India:** Bihar, Jharkhand, Sub-Himalayan West Bengal & Sikkim; Gangetic West Bengal, Odisha and Andaman & Nicobar Islands.
 - **Northeast India:** Arunachal Pradesh, Assam & Meghalaya and Nagaland, Manipur, Mizoram & Tripura.
 - **West India:** Gujarat Region, Saurashtra & Kutch, Konkan & Goa, Madhya Maharashtra and Marathawada.
 - **South India:** Coastal Andhra Pradesh & Yanam, Telangana, Rayalaseema, Coastal Karnataka, North Interior Karnataka, South Interior Karnataka, Kerala & Mahe, Tamil Nadu, Puducherry & Karaikal and Lakshadweep.

LEGENDS

1. अंडमान और निकोबार द्वीपसमूह

2. अरुणाचल प्रदेश

3. असम और मेघालय

4. नागालैंड, मणिपुर, मिजोरम और त्रिपुरा

5. उप-हिमालयी पश्चिम बंगाल और सिक्किम

6. गंगीय पश्चिम बंगाल

7. ओडिशा

8. झारखंड

9. बिहार

10. पूर्वी उत्तर प्रदेश

11. पश्चिम उत्तर प्रदेश

12. उत्तराखंड

13. हरियाणा, चंडीगढ़ और दिल्ली

14. पंजाब

15. हिमाचल प्रदेश

16. जम्मू और कश्मीर और लद्दाख

17. पश्चिम राजस्थान

18. पूर्वी राजस्थान

19. पश्चिम मध्य प्रदेश

20. पूर्वी मध्य प्रदेश

21. गुजरात

22. सौराष्ट्र

23. कोंकण और गोवा

24. मध्य महाराष्ट्र

25. मराठवाड़ा

26. विदर्भ

27. छत्तीसगढ़

28. तटीय आंध्र प्रदेश और यनम

29. तेलंगाना

30. रायलसीमा

31. तमिलनाडु, पुडुचेरी और कराईकल

32. तटीय कर्नाटक

33. आंतरिक उत्तरी कर्नाटक

34. आंतरिक दक्षिणी कर्नाटक

35. केरल और माहे

36. लक्षद्वीप



1. Andaman & Nicobar Islands

2. Arunachal Pradesh

3. Assam & Meghalaya

4. Nagaland, Manipur, Mizoram & Tripura

5. Sub-Himalayan West Bengal & Sikkim

6. Gangetic West Bengal

7. Odisha

8. Jharkhand

9. Bihar

10. East Uttar Pradesh

11. West Uttar Pradesh

12. Uttarakhand

13. Haryana, Chandigarh & Delhi

14. Punjab

15. Himachal Pradesh

16. Jammu & Kashmir and Ladakh

17. West Rajasthan

18. East Rajasthan

19. West Madhya Pradesh

20. East Madhya Pradesh

21. Gujarat

22. Saurashtra

23. Konkan & Goa

24. Madhya Maharashtra

25. Marathwada

26. Vidarbha

27. Chhattisgarh

28. Coastal Andhra Pradesh & Yanam

29. Telangana

30. Rayalaseema

31. Tamilnadu, Puducherry & Karaikal

32. Coastal Karnataka

33. North Interior Karnataka

34. South Interior Karnataka

35. Kerala & Mahe

36. Lakshadweep

SPATIAL DISTRIBUTION (% of Stations reporting)

| % Stations | Category | % Stations | Category |
|------------|-------------------------------------|------------|------------------------------|
| 76-100 | Widespread (WS/Most Places) | 26-50 | Scattered (SCT/A Few Places) |
| 51-75 | Fairly Widespread (FWS/Many Places) | 1-25 | Isolated (ISOL) |



Fog



Heavy Snow



Cold Wave



Heavy Rain



Dust Storm



Cold Day



Very Heavy Rain



Heat Wave



Ground Frost



Extremely Heavy Rain



Warm Night



Thunder & Lightning



Hot Day



Hailstorm



Hot & Humid



Dust Raising Winds



Strong Surface Winds

COLOUR CODED WARNING

No Warning (No Action)

Watch (Be Aware)

Alert (Be Prepared To Take Action)

Warning (Take Action)

Probabilistic Forecast

| Terms | Probability of Occurrence (%) |
|-------------|-------------------------------|
| Unlikely | < 25 |
| Likely | 25 - 50 |
| Very Likely | 50 - 75 |
| Most Likely | > 75 |

* Red colour warning does not mean "Red Alert", Red colour warning means "Take Action".

Forecast and Warning for any day is valid from 0830 hours IST of day till 0830 hours IST of next day.

For more details, kindly visit <https://mausam.imd.gov.in> or contact: 011-2434-4599

(Service to the Nation since 1875)

DEFINITION/CRITERIA

Rain/ Snow *

Heavy: 64.5 to 115.5 mm/cm *
Very Heavy: 115.6 to 204.4 mm/cm *
Extremely Heavy: > 204.4 mm/cm *

Heat Wave

When maximum temperature of a station reaches $\geq 40^{\circ}\text{C}$ for plains and $\geq 30^{\circ}\text{C}$ for hilly regions

(a) Based on Departure from normal

Heat Wave: Maximum Temperature Departure from normal 4.5°C to 6.4°C .

Severe Heat Wave: Maximum Temperature Departure from normal $\geq 6.5^{\circ}\text{C}$

(b). Based on Actual maximum temperature

Heat Wave: When actual maximum temperature $\geq 45^{\circ}\text{C}$.

Severe Heat Wave: When actual maximum temperature $\geq 47^{\circ}\text{C}$.

(c). Criteria for heat wave for coastal stations

When maximum temperature departure is $> 4.5^{\circ}\text{C}$ from normal. Heat Wave may be described provided maximum temperature $\geq 37^{\circ}\text{C}$.

Warm Night

When maximum temperature remains 40°C

Warm Night: When minimum temperature departure 4.5°C to 6.4°C .

Severe Warm Night: When minimum temperature departure $> 6.4^{\circ}\text{C}$.

Cold Wave

When minimum temperature of a station $\leq 10^{\circ}\text{C}$ for plains and $\leq 0^{\circ}\text{C}$ for hilly regions.

(a). Based on departure

Cold Wave: Minimum Temperature Departure from normal -4.5°C to -6.4°C .

Severe Cold Wave: Minimum Temperature Departure from normal $\leq -6.5^{\circ}\text{C}$

(b) Based on actual Minimum Temperature (for Plains only)

Cold Wave: When Minimum Temperature is $\leq 4.0^{\circ}\text{C}$

Severe Cold Wave: When Minimum Temperature is $\leq 2.0^{\circ}\text{C}$

(c) For Coastal Stations

When Minimum Temperature departure is $\leq -4.5^{\circ}\text{C}$ & actual Minimum Temperature is $\leq 15^{\circ}\text{C}$

Cold Day

When minimum temperature of a station $\leq 10^{\circ}\text{C}$ for plains and $\leq 0^{\circ}\text{C}$ for hilly regions

Based on departure

Cold Day: Maximum Temperature Departure from normal -4.5°C to -6.4°C .

Severe Cold Day: Maximum Temperature Departure from normal $\leq -6.5^{\circ}\text{C}$

Fog

Phenomenon of small droplets suspended in air and the horizontal visibility $< 1\text{km}$

Moderate Fog: When the visibility between 500-200 metres

Dense Fog: when the visibility between 50- 200 metres

Very Dense Fog: when the visibility < 50 metres

Thunderstorm

Sudden electrical discharges manifested by a flash of light (Lightning) and a sharp rumbling sound (thunder)

Dust/Sand Storm

An ensemble of particles of dust or sand energetically lifted to great heights by a strong and turbulent wind.

Frost

Ice deposits on ground

Air temperature $\leq 4^{\circ}\text{C}$ (over Plains)

Squall

A strong wind that rises suddenly, lasts for atleast 1 minute.

Moderate: Wind speed 52-61 kmph

Severe: Wind speed 62-67 kmph

Very Severe: Wind speed > 67 kmph

Sea State

Effect of various waves in the sea over specific area

Rough to very rough: Wind speed 41-62 kmph (22-33 knots) & Wave height 2.5-6 metre

High to very high: Wind speed 63-117 kmph (34-63 knots) & Wave height 6-14 metre

Phenomenal: Wind speed > 117 kmph (> 63 knots) & Wave height > 14 metre

Cyclone

Cyclonic Storm: Wind speed 62-87 kmph (34-47 knots)

Severe Cyclonic Storm: Wind speed 88-117 kmph (48-63 knots)

Very Severe Cyclonic Storm: Wind speed 118-165 kmph (64 - 89 knots)

Extremely Severe Cyclonic Storm: Wind speed 166-220 kmph (90 -119 knots)

Super Cyclone Storm: Wind speed > 220 kmph (> 119 knots)

* Red colour warning does not mean "Red Alert", Red colour warning means "Take Action".

Forecast and Warning for any day is valid from 0830 hours IST of day till 0830 hours IST of next day.

For more details, kindly visit <https://mausam.imd.gov.in> or contact: 011-2434-4599

(Service to the Nation since 1875)

Hot and Humid: When maximum temperatures remain 3°C above normal along with the above normal relative humidity.